



LX Pantos Links the World

LX Pantos VISIBILITY



LX Pantos Visibility

Live View, Accurate View, Customer View, PantosView

Thinking from the customers' point of view, we deliver value beyond what you see.
LX Pantos offers an invaluable visibility service that allows customers to view international transportation and warehousing information at a glance, through an IT-based real-time control system linked with competitive global networks covering every corner of the world.



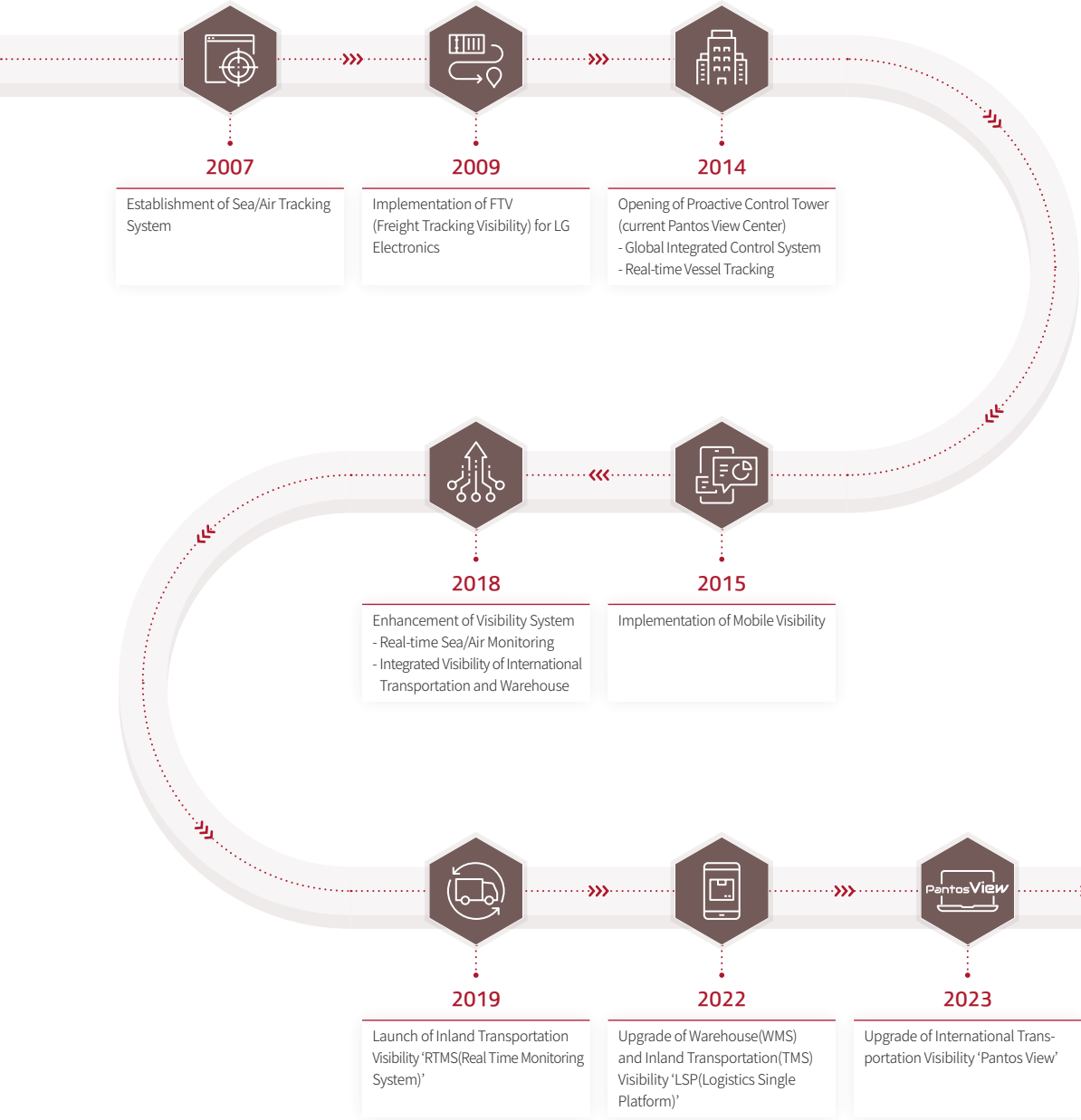
LX Pantos Global Network



Region	Korea(HQ)	China	Asia	India/ME/Africa	Europe	North America	South America	CIS
Country			10	5	9	2	5	3
Network	70	99	41	50	38	33	16	10
Warehouse	97	48	52	31	31	19	21	2

Visibility History

LX Pantos is leading innovation in the logistics industry by being the first in the domestic market to establish a 'Visibility Control System.'



End-to-End Visibility

LX Pantos provides real-time End-to-End visibility service from origin to destination, predicting and preparing for various risks that can affect on-time delivery. Based on data monitored and managed by automation technology and our global network, we provide the whole flow of the transportation. To enhance data quality, we continuously manage operation indicators and implement quality improvement activities.

Transport Risk Management

Monitoring Range:

Sea/Air/Rail/Inland transportation

Real-time Data Source:

Collect various external data such as weather, risk news, port terminal information to monitor all risks related to vessels, routes, and hubs.

Quality Management Indicators:

- Irregularity on-time registration rate
- On-time customer notification rate
- On-time establishment rate for improvement
- Long-pending Irregularity rate

International Transportation

Monitoring Range:

Sea/Air/Rail international transportation

Real-time Data Source:

Integrate automated technologies such as EDI* (shipping lines/airlines/rail carriers), vessel AIS* information and RPA* to provide real-time location and transshipment/arrival information of the shipment.

*EDI(Electronic Data Interchange) *AIS(Automatic Identification System)

*RPA(Robotic Process Automation)

Quality Management Indicators:

- Accuracy rate of arrival schedule at the time of on-board (Initial POD ETA)
- Accuracy rate of updated arrival schedule (Updated POD ETA)
- On-time input rate of arrival at POD and final destination (POD/F.DEST ATA)
- On-time input rate of full container out and empty return (CY ATD, Empty Return)

Inland Transportation

Monitoring Range:

Domestic/Overseas trucking

Real-time Data Source:

Track GPS signal of the vehicle to gather location information and optimize transportation routes, providing updated information of ETA(Estimated Time of Arrival) and irregular situations.

Quality Management Indicators:

- On-time pickup rate by transportation companies
- On-time delivery rate
- On-time IOD* receipt rate

*IOD(Information of Delivery)

Warehouse

Monitoring Range:

Inbound/Storage/Outbound

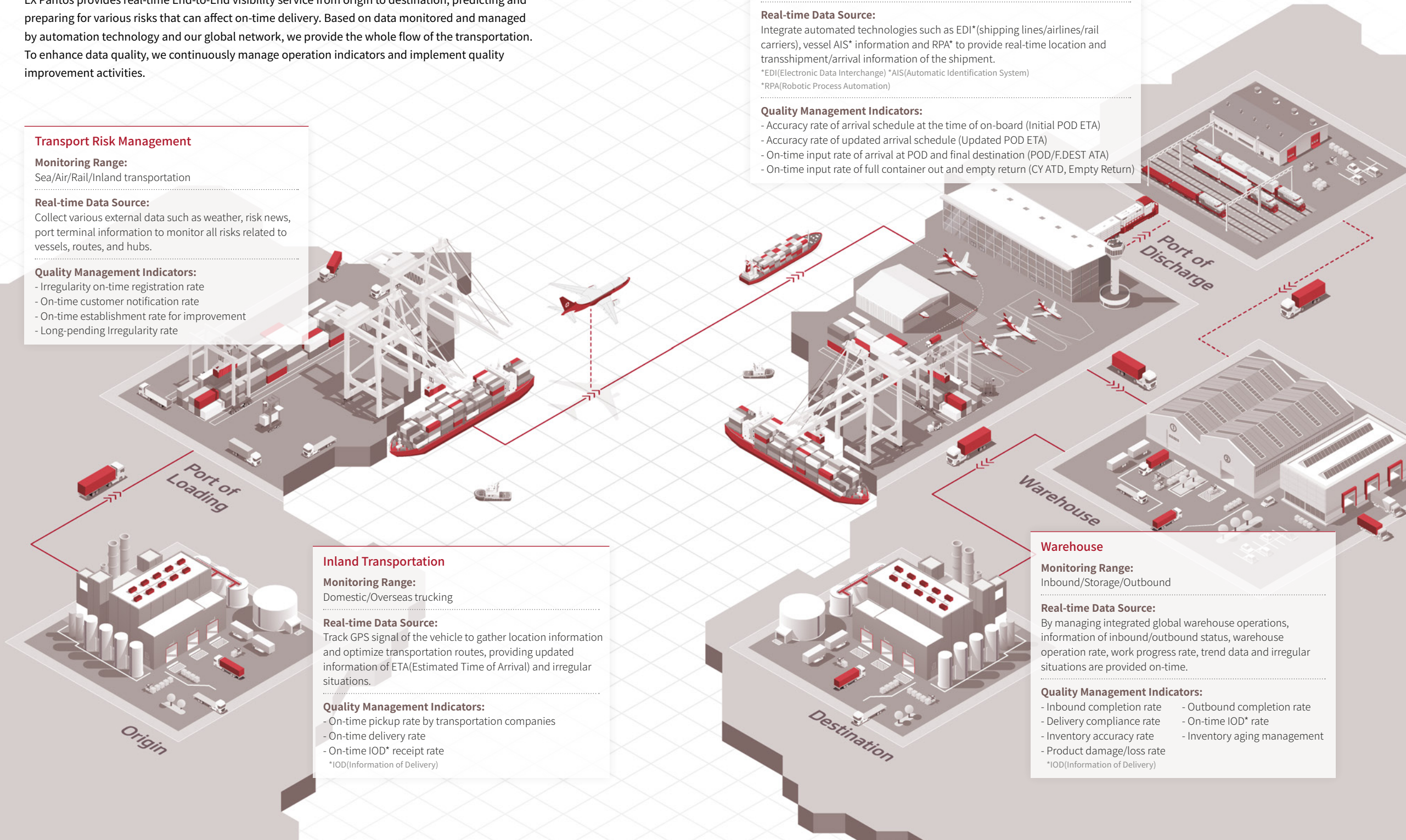
Real-time Data Source:

By managing integrated global warehouse operations, information of inbound/outbound status, warehouse operation rate, work progress rate, trend data and irregular situations are provided on-time.

Quality Management Indicators:

- Inbound completion rate
- Delivery compliance rate
- Inventory accuracy rate
- Product damage/loss rate
- Outbound completion rate
- On-time IOD* rate
- Inventory aging management

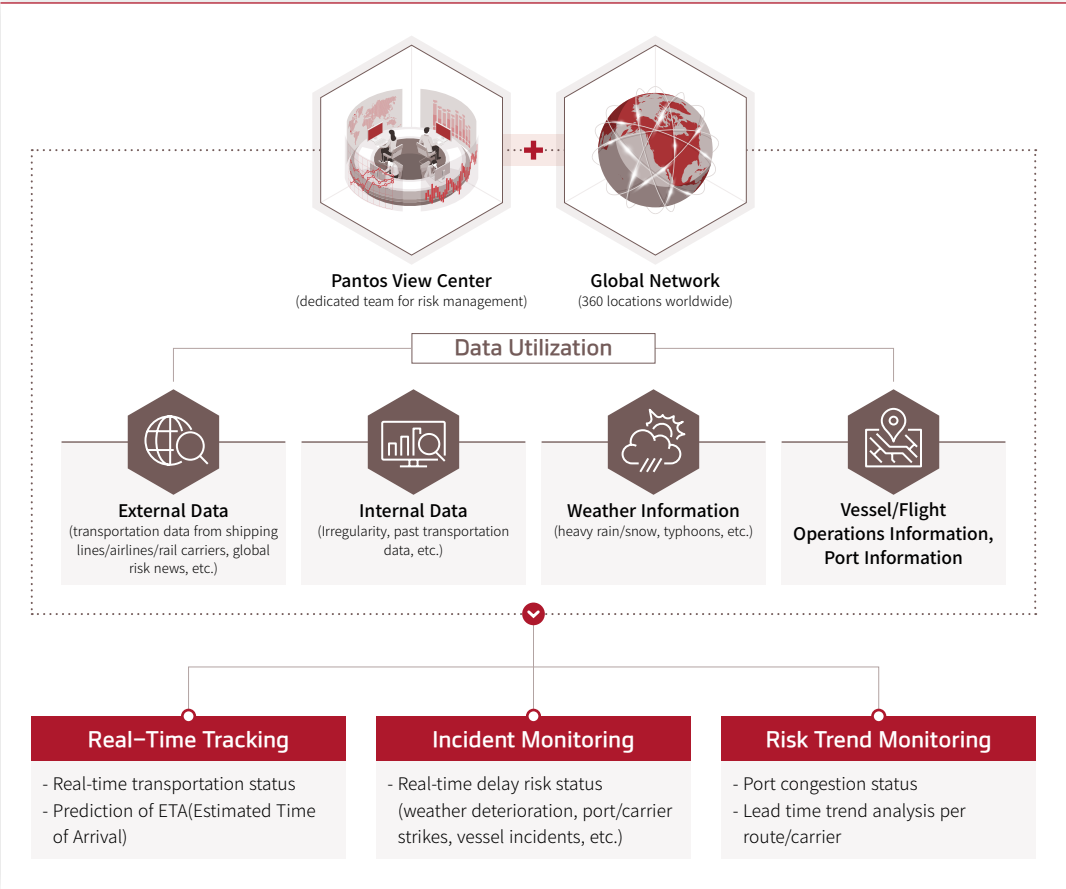
*IOD(Information of Delivery)



Risk Management

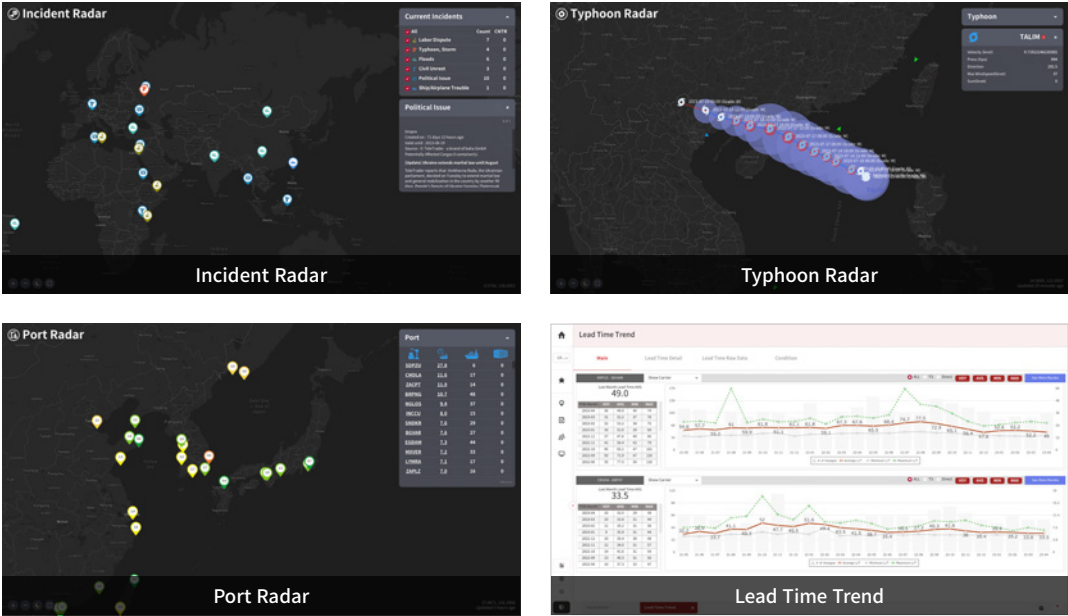
Pantos View Center

Pantos View Center monitors real-time location information of all transportation modes and thoroughly analyzes various transportation delay risks from weather deterioration to port/carrier strikes, vessel incidents, and schedules. We focus on immediately sharing irregular situation with customers to minimize transport damages.



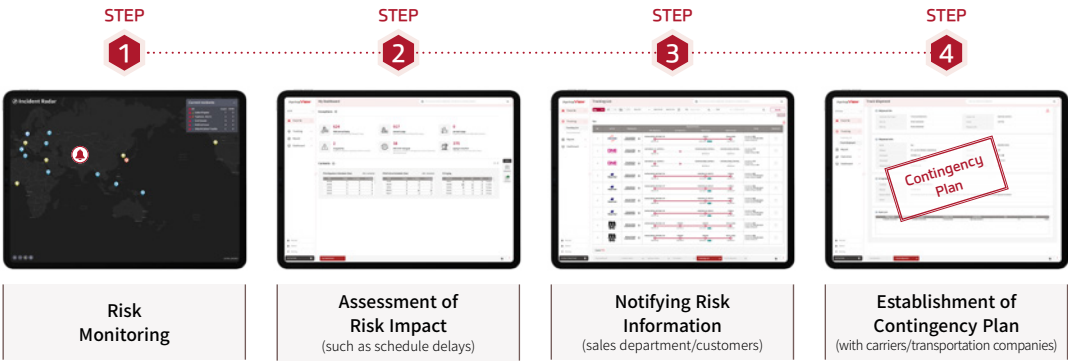
Risk Management Range

We are not only monitoring all risk events that may affect on-time delivery, including weather deterioration, vessel incidents, strikes, etc., but also analyzing and utilizing lead time trends information per route, to proactively take actions against the shipments' delay risks.



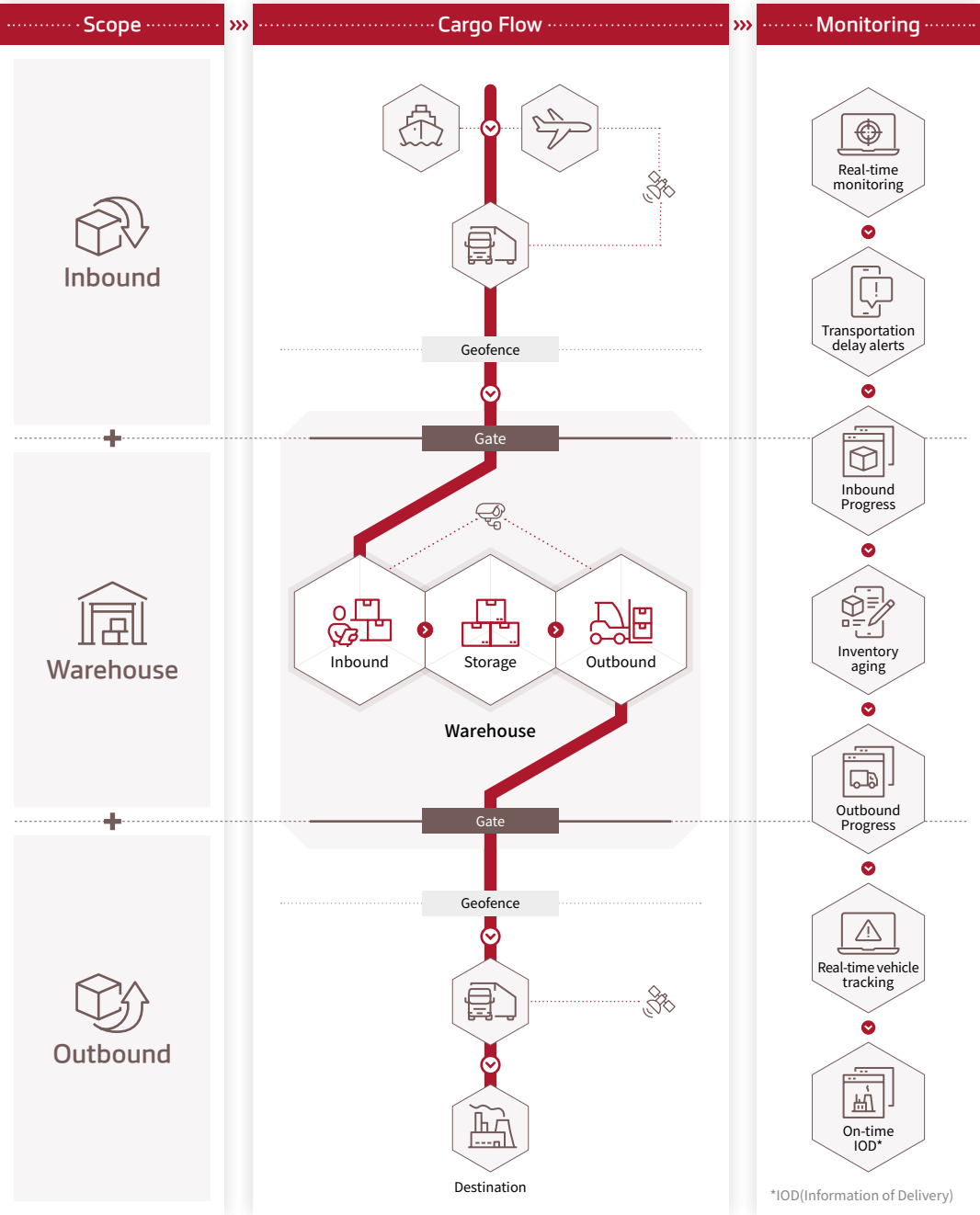
Risk Management Process

We monitor all risk events occurring during international transportation to assess their impact and promptly share such information with customers through e-mail and Irregularity registration.



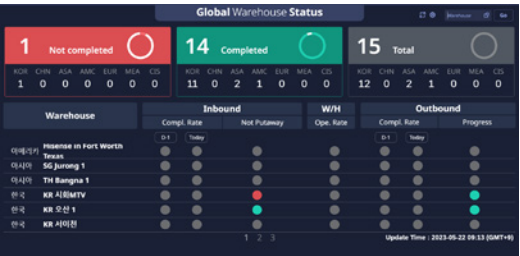
Warehouse Visibility

By securing real-time visibility of warehouse operations, it enables customers to establish a proactive responding system for predictable issues and implement logistics strategy based on operation performance data.



Warehouse Irregularity Management

We detect irregular situations in the warehouse by displaying traffic light and take prompt actions.



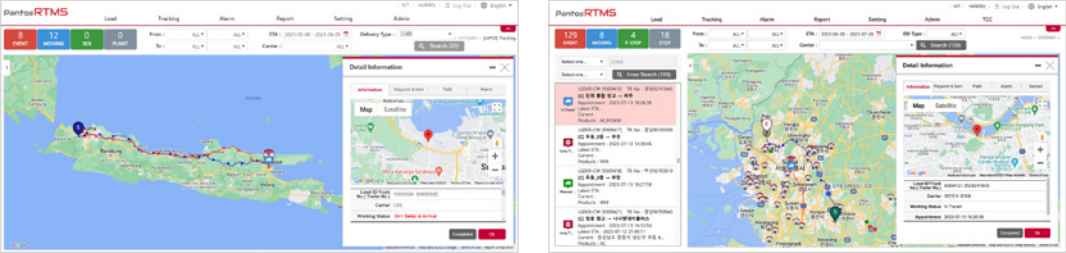
Warehouse Operation Status Management

We provide real-time information of the warehouse operations through the Logistics Single Platform, allowing you to notice the status at a glance.



Vehicle Tracking

Based on the Real Time Monitoring System, we offer real-time dispatch status and optimize transportation routes by tracking GPS signal of the vehicle. For important shipment, IoT devices are attached to monitor damages and temperature/humidity changes in real-time. In case of any irregular situations, notifications are provided by e-mail and messenger.



Meet LX Pantos Visibility

Experience LX Pantos Visibility for all transportation modes through the web, mobile, and e-mail services!

International Transportation

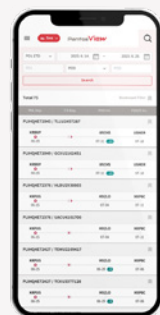
- Shipment tracking and transportation schedules
- Provision of shipping documents (B/L, C/I, P/L, POD)
- Provision of transportation risk status
- Customized widget function
- Dashboard (real-time transport dashboard and Incident Radar)
- Carbon footprint information
 - Carbon emissions per container and B/L
 - Calculation of emissions based on transportation mode/route
- Mailing service
 - Tracing Report
 - Delay Notice
 - Pre-arrival Notice
 - Arrival Notice

Warehouse and Distribution

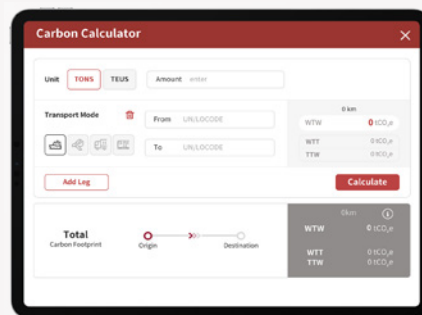
- Order creation and tracking status
- Dashboard (management of warehouse operations and irregular situations)
- Monitoring based on IoT (damage and temperature/humidity)
- Notification of Irregularities of warehouse and transportation
- Real-time tracking of inland transportation
- View and download e-POD (Electronic Proof of Delivery)
- Support interface with customers' system

*LX Pantos can also provide its tracking data directly through interface with customers' systems.

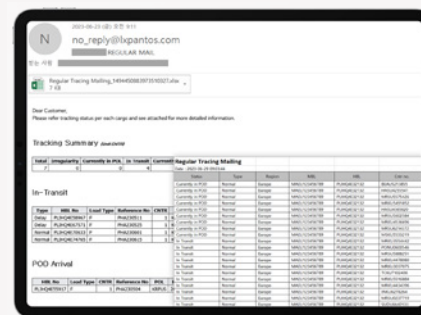
*For warehouse inbound/outbound process, orders can be made by interfacing with LX Pantos warehouse management system and the customer's system.



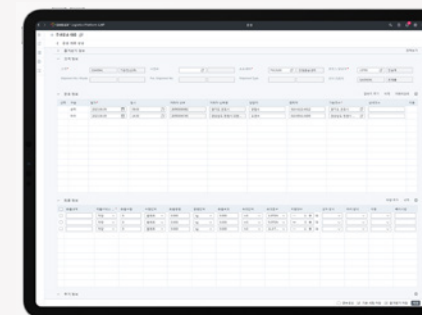
Tracking list



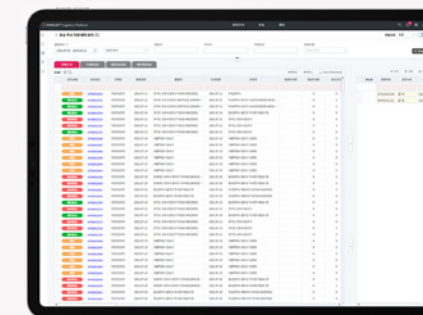
Carbon calculator



Mailing service sent regularly at selected time



Transportation order registration



Transportation order and dispatch status confirmation



Dispatch and departure/arrival confirmation

